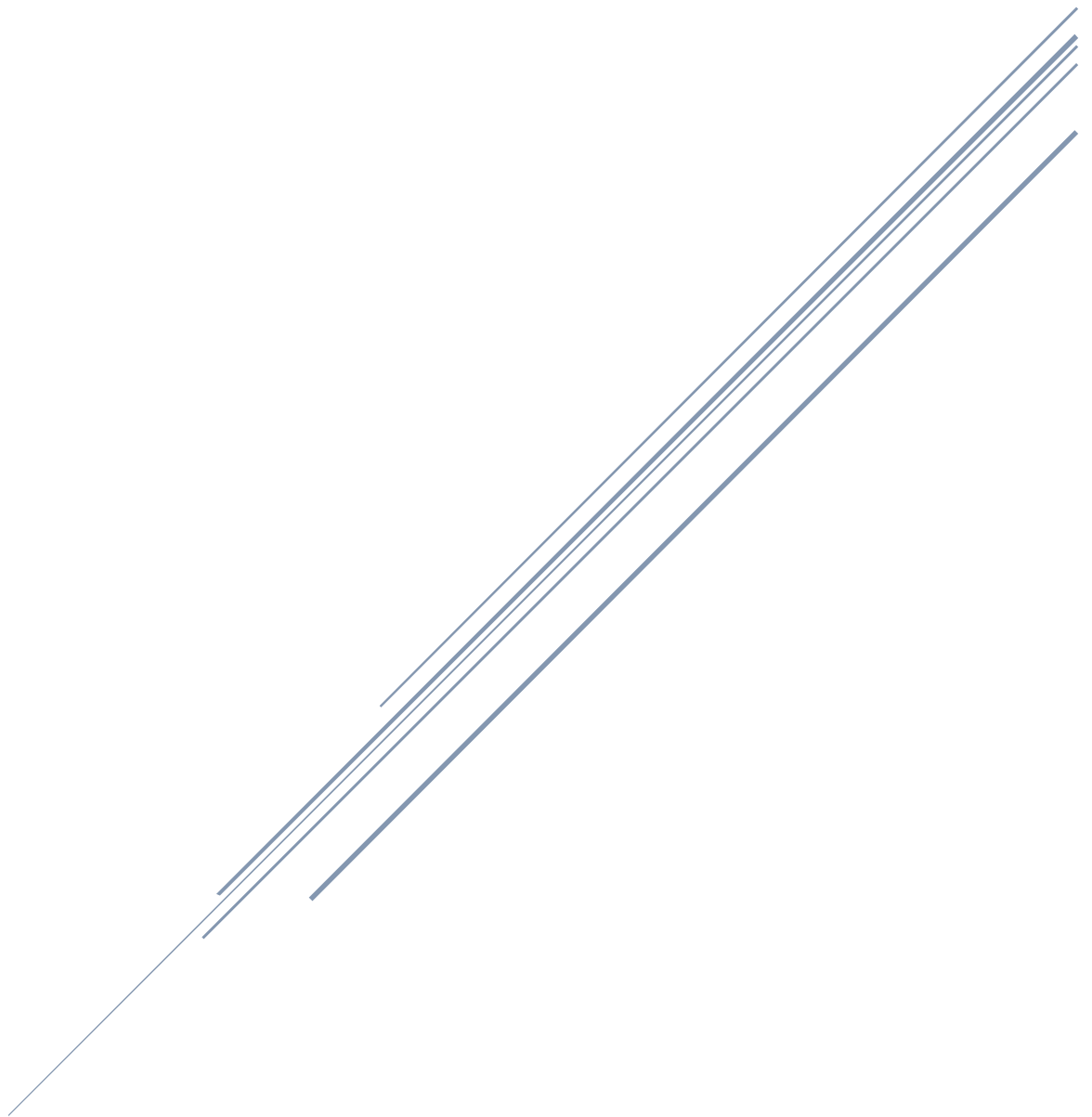
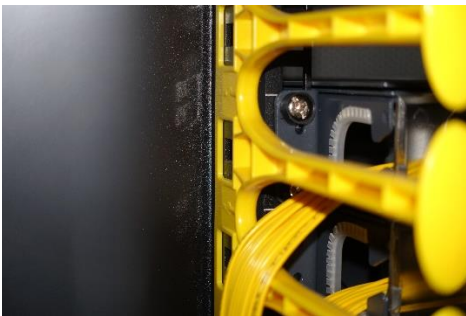


# SUMMARY OF FTTX PRODUCTS IN HOSPITALITY



## Double-hinged Cabinet



## AT HEADEND

InBERG's Double hinge cabinets are located at the headend with good facility of cable management.

The cable chamber between cabinets allow the running and storage of excess length of optical fibers.

The double hinged doors allow easy operation of patching of optical fibers for technician daily works.

Finger guides insert along the vertical mounting rail of the cabinet, it has a good protection of optical fibers.

Storage pools is for the storage of optical fiber patch cords while there are excess length of optical fibers

Cable trough allow the running of fiber patch cords along the cabinet

## InBERG Cabinet



Perforated door



Adjustable mounting rail



Removable hinged door



Buffer design door



Removable top cover



Side doors

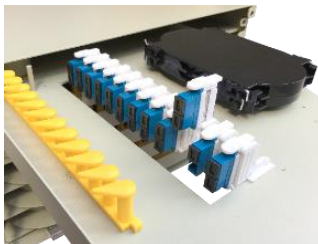
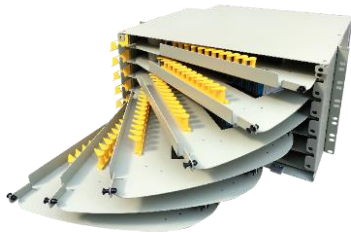


## AT HEADEND

InBERG's Cabinet is suitable for Data Center or TBE room environment, and it consists of good features such as:

- Perforated doors with high ventilation rate
- Adjustable mounting rails
- Removable hinged door
- Buffer design door
- Removable top cover
- Side doors easy to remove

## High-density Rack Mount Panels



## AT HEADEND

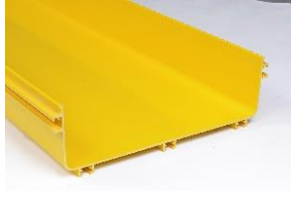
InBERG offers different types of high density rack mount panels.

With the high termination fiber counts, each type of panel offers bending radius protection for optical fibers.

Sliding adaptors design allow good connector access while patching.

Traditional design with swing-out tray and pull-out tray

## Fiber Raceway

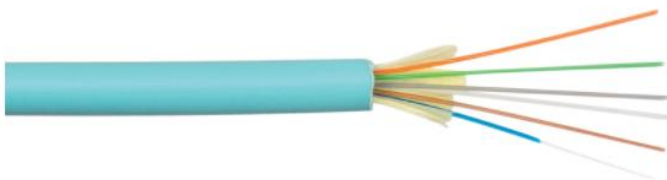
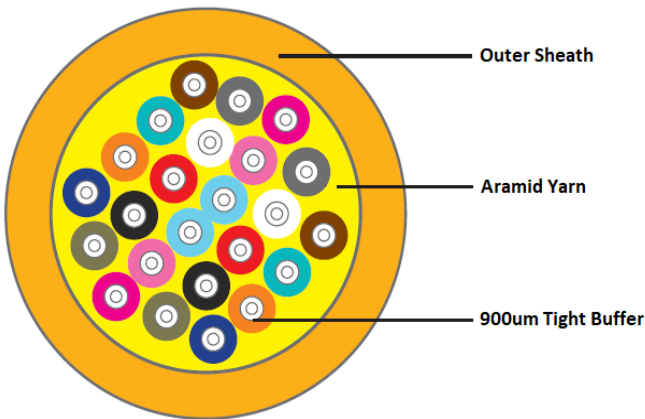


## AT HEADEND

Fiber Raceway is a dedicated trunking which made of ABS/PVC material. It allows the running of fiber patch cords between cabinets.

More than 40 components. Combining different of them in order to build up the route for running the patch cords.

## Indoor Distribution Optical Fiber Cable



## AT HEADEND & RISER

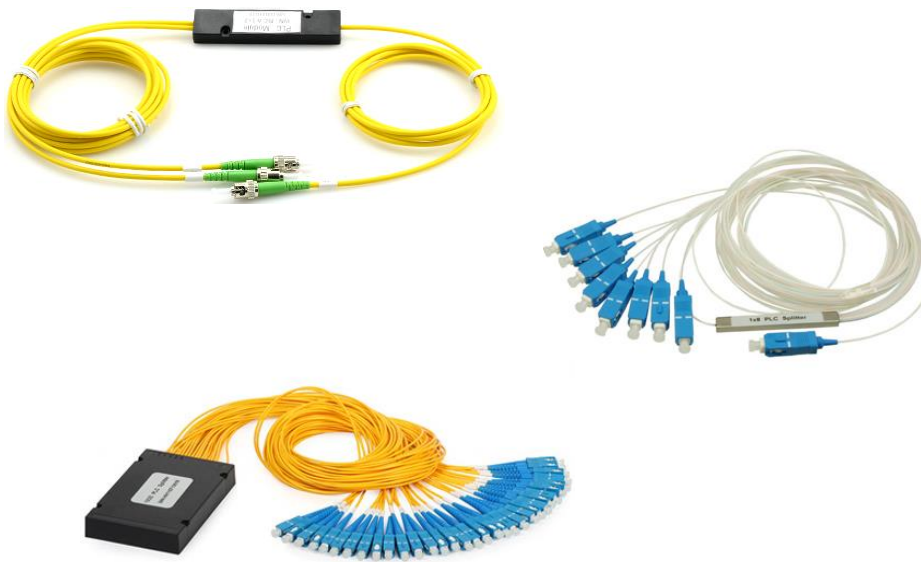
Indoor Distribution Optical Fiber Cable is designed for use in riser and general purpose environments for intrabuilding backbone and horizontal installations.

Each fiber is color coded for easy identification, flexible and easy to handle with lightweight aramid yarns to enhance strength.

Fiber offered from 2 to 144 cores, and with PVC or LSZH sheath.



## Optical Splitters



1x2, 1x4, 1x16, 1x32 splitters (fused type & PLC type)



## SPLITTERS EVERYWHERE

Optical Splitter is the major component in the FTTx topology, it comes with different splitting ratio. The consistency of the insertion/return loss in dB are very important, since it will affect the performance of the optical path.

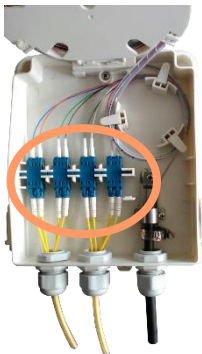
Low splitting ratio splitters (1x2 or 1x4) usually located at the last miles(hotel room).

It usually connects to the modems directly after splitting, which may connects to the wifi modem or IPTV services etc inside hotel room.

The modular type splitters located at the headend. Due to the different locations of the optical paths, the splitting ratio usually high (1x8 or 1x16).

The modular type splitter has a better cable management, the splitter is installed inside a module, which eliminates the problem of broken fibers or bending radius concerns.

## Wall Mount Box



Wall Mount boxes are offered in 4 to 48 terminations



Storage facility for in-coming cables

## AT LAST MILES

Wall mounted boxes with different capacity are available. It is located at different floors.

No. of terminations are depended on no. of rooms, the architecture of the hotel/building.

Cable management is important in a compact enclosure; and the material of the boxes depended on the environment.

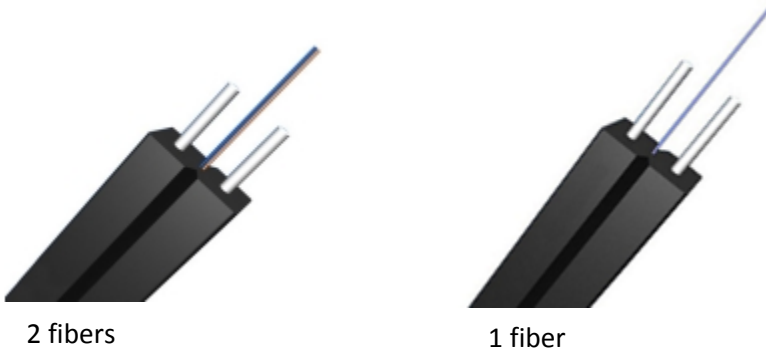
InBERG offers boxes in aluminum, ABS material or steel etc.



## Drop Cables



Structure of Drop Cable



Drop cables – last miles

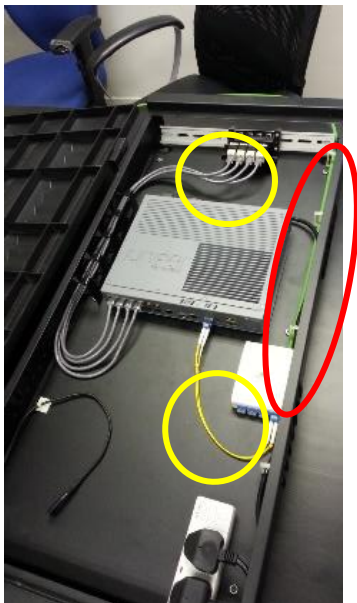
## AT HOTEL ROOM

InBERG offers different types of drop cables with strong protection of its fibers.

The flame retardant sheath which meets most of the safety standard along the risers.

The supporting wire and the strength member provide a strong mechanism, which allow good protection during cable installation.

## In-room panel



## AT HOTEL ROOM

In-room panel is located inside the wardrobe of the hotel room, it is a demarcation point for incoming cables.

The incoming cables connect to the equipment and then providing services like Wifi, Remote Control Units or some intelligent devices.

Cable management is important inside panel, the cable rings and service loops helps technician while patching and maintenance